


GTX™ 170 / 230

Comfort, control and power
are always in style.

KEY FEATURES

- Rotax® 1630 ACE™ – 170/230
- ST3 Hull™
- iDF – Intelligent Debris-Free Pump System (optional 230)
- BRP Audio – Premium System (opt. on 230)
- iBR® – Intelligent Brake & Reverse
- VTST™ – Variable Trim System
- LinQ® attachment system
- Boarding ladder
- Direct-access front storage
- Watertight phone compartment



 Eclipse Black & Orange Crush

CAPACITY

Rider Capacity	3
Weight Capacity	600 lb/272 kg
Fuel Capacity	18.5 US gal/70 L
Glove Box	0.8 US gal/2.9 L
Front Bin	25.3 US gal/96 L
Storage Capacity – Total	26.1 US gal/98.9 L

DIMENSIONS

Length (bumper to bumper)	135.9"/345.1 cm
Width	49.4"/125.5 cm
Height	44.8"/113.8 cm

HULL

Type	ST3 Hull™
Material	Fiberglass

OTHER FEATURES

- Ergolock™ two-piece seat with stepped design
- Seat strap
- RF D.E.S.S.™ key**
- Wide-angle mirrors
- Handle grips with palm rest
- Footwell carpets
- Large swim platform
- Tilt steering
- Ski tow eye

ROTAX® ENGINE

	1630 ACE™ – 170	1630 ACE™ – 230
Model	GTX ¹ 170	GTX ¹ 230
Intake System	Naturally aspirated	Supercharged with external intercooler
Displacement	1,630 cc	
Cooling	Closed-Loop Cooling System (CLCS)	
Reverse System	Electronic iBR**	
Fuel Type	95 Octane	
Throttle System	iTC™ (Intelligent Throttle Control)	
Exhaust System	D-Sea-Bel™ system	

GAUGE

Type of Gauge	7.6" wide digital display
Main Functions	<ul style="list-style-type: none"> • Speedometer • RPM • Clock • VTST™
iTC System – Mode	<ul style="list-style-type: none"> • Sport mode • ECO® mode
	<ul style="list-style-type: none"> • Fuel consumption • Fuel autonomy • Vehicle hours • Slow mode • Speed regulator

WEIGHT

Dry Weight	776 lb/352 kg	809 lb/367 kg
------------	---------------	---------------

WARRANTY

BRP limited warranty covers the watercraft for 2 years.

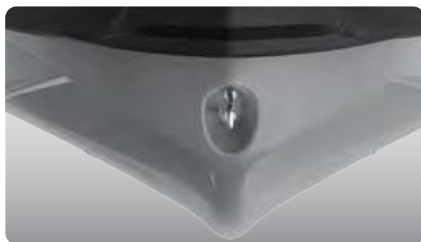
¹Electronic brake, neutral and reverse.
**May not be available at time of purchase. Please check with your dealer.

GTX™ 170/230**FEATURE HIGHLIGHTS****iDF – Intelligent Debris-Free Pump System** (Optional)

An innovative, industry-first system that allows you to free your pump of weeds and debris with intuitive handlebar-activated controls.

**BRP Audio – Premium System** (Optional on 230) An industry-first manufacturer-installed truly waterproof Bluetooth¹ audio system.**Swim Platform with Integrated LinQ System**

Exclusive quick-attach system on the largest swim platform in the industry allows for easy installation of storage accessories.

**ST3 Hull™**

An innovative hull that sets the benchmark for rough water handling, stability and offshore performance.

**Direct-Access Front Storage**

Large front storage area that's easily accessible from a seated position.¹

¹ Larger storage front bin organizer is not included.